

# CERTIFICATE OF LOCATION OF GOVERNMENT CORNER

NORTHEAST Corner of Section 4, Township 106, Range 39, 5TH P.M.

STATE OF MINNESOTA, County of MURRAY

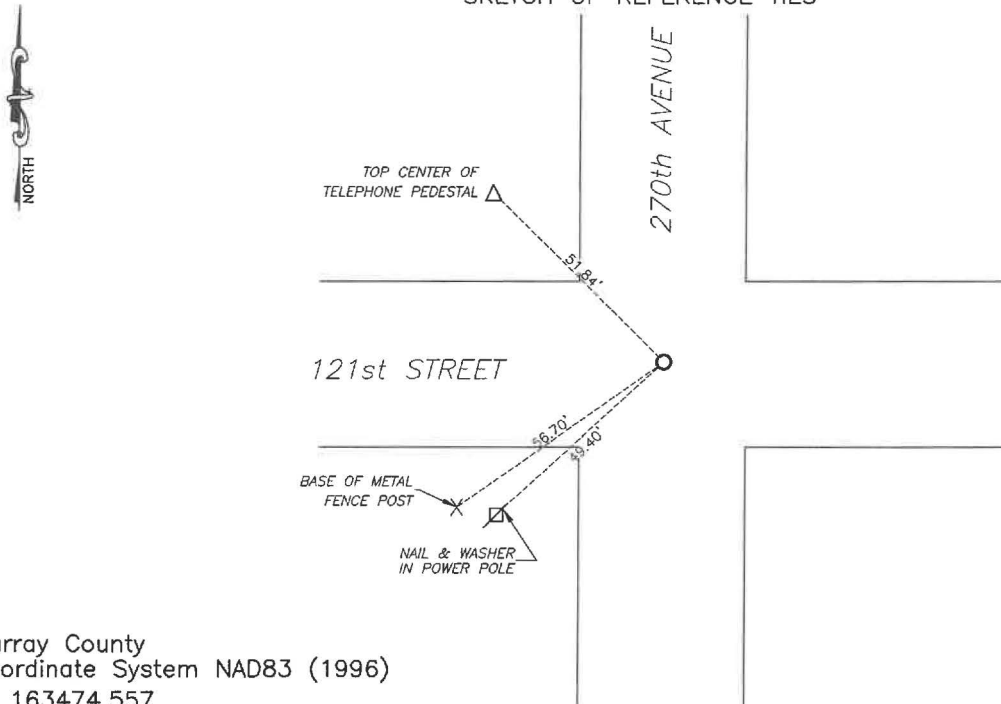
At the corner location shown on the sketch:

☒ On 7/22/2024 found a 10"x14" field stone with a wooden stake along side it.  
DATE

☒ left monument as found, ☐ lowered monument, ☐ removed monument (explain)

☒ On 1/16/2025 placed a 5/8" iron with seal #43844 over top of the stone  
DATE

SKETCH OF REFERENCE TIES



Murray County  
Coordinate System NAD83 (1996)  
N: 163474.557  
E: 564229.249

WGS84  
LAT: 44°01'18.8598"  
LON: -95°31'21.0340"

Statement of evidence relative to this corner location is on back of page.

I hereby certify that this document and the data contained herein was prepared by me or under my direct supervision.

Daniel L. Bueltel  
License No. 43844

3/12/2025  
DATE

MAR 13 2025

MURRAY COUNTY RECORDER

Statement of Evidence

NORTHEAST CORNER SECTION 4, T106N, R39W of the 5th P.M.

In September 1858, W.J. Neely surveyed the east township line.

In July of 1861, J.W. Myers surveyed the north, south, and west township lines.

In August of 1861, Wellman & Smoot subdivided the township.

A survey of section 4 was done in June of 1895 but nothing was recorded at the corner.

On July 22, 2024 Bueltel-Moseng Land Surveying dug with a backhoe and found a 10"x14" field stone 2' below the road surface with a wooden stake along side the stone. Stone was in the center of the intersection of the township roads. Accepted the stone as the monument. Returned on January 16, 2025 and set a  $\frac{5}{8}$ " iron with seal #43844 over top of the stone.